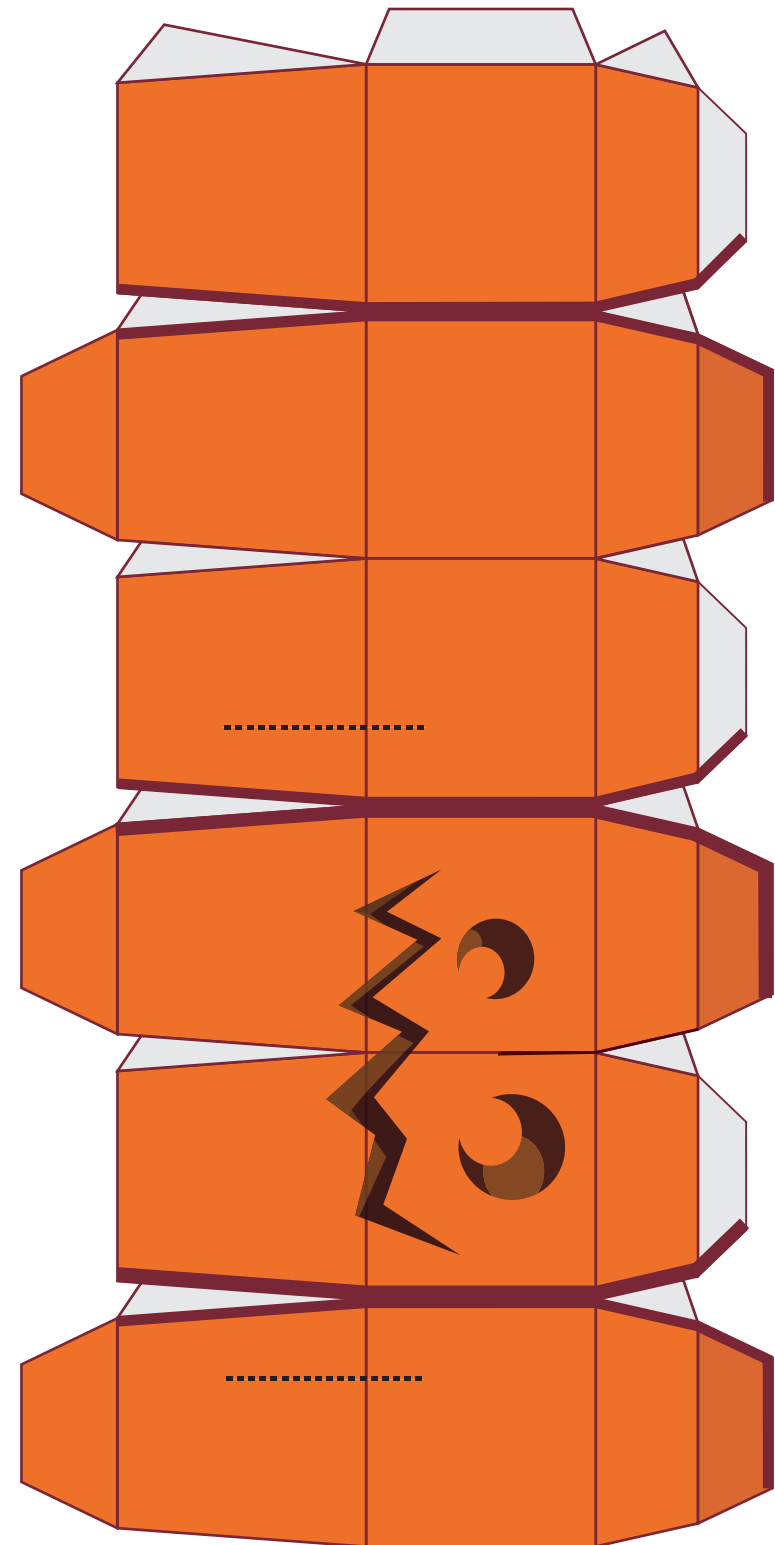
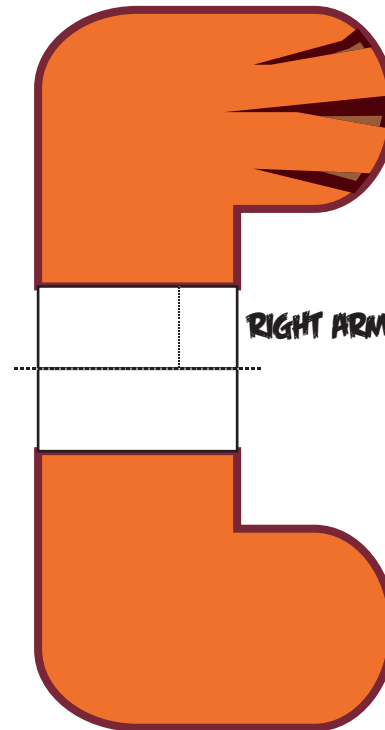
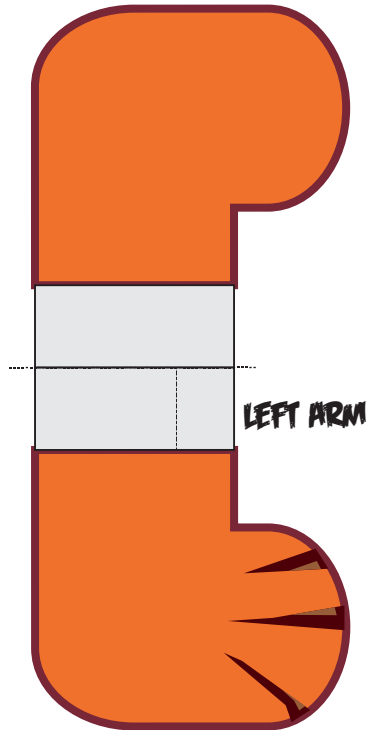
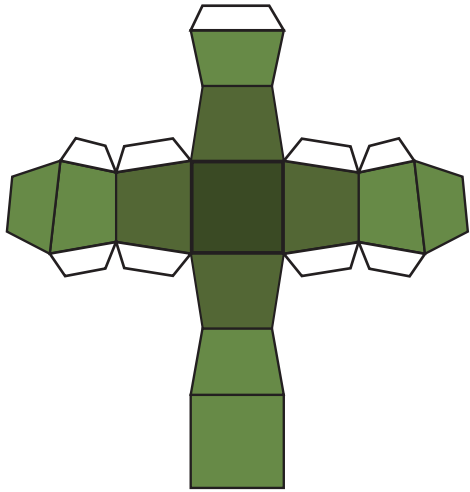
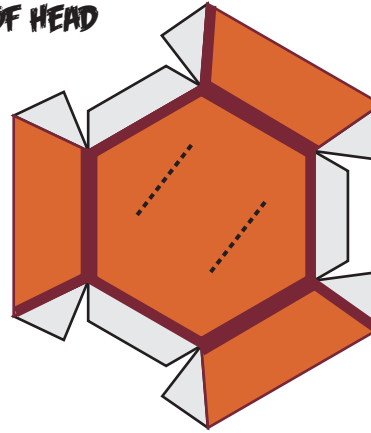
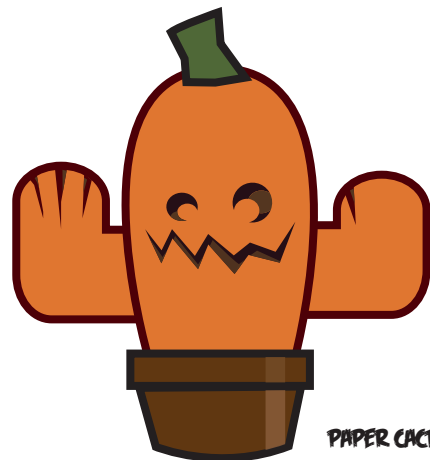
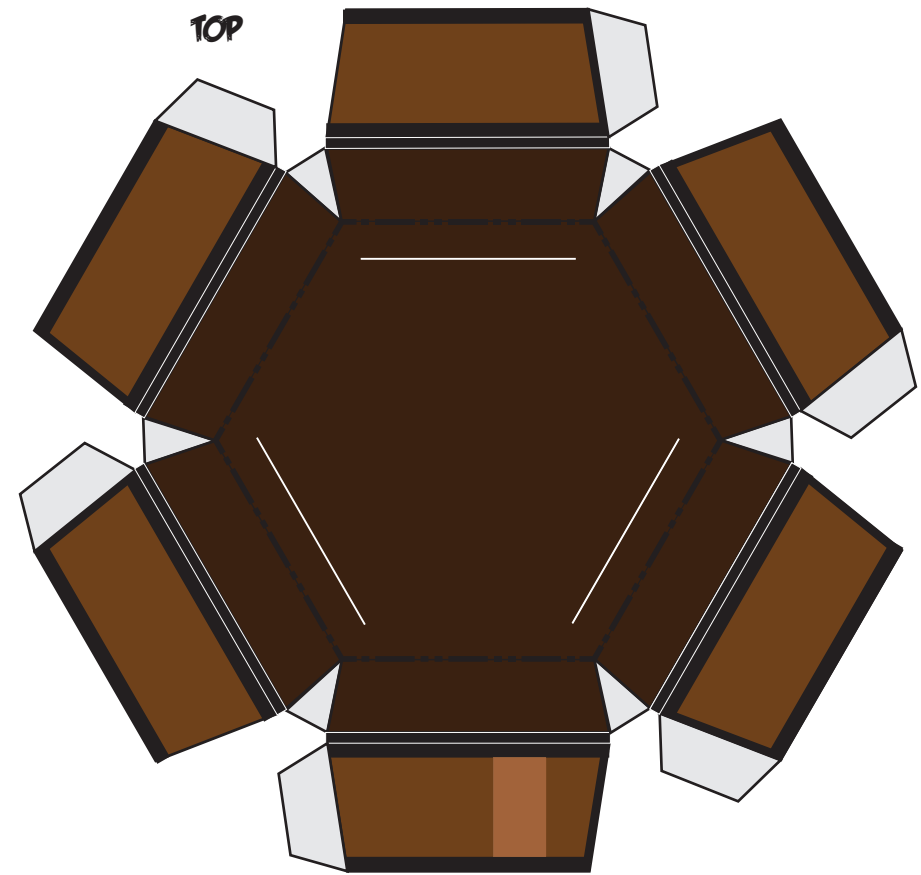
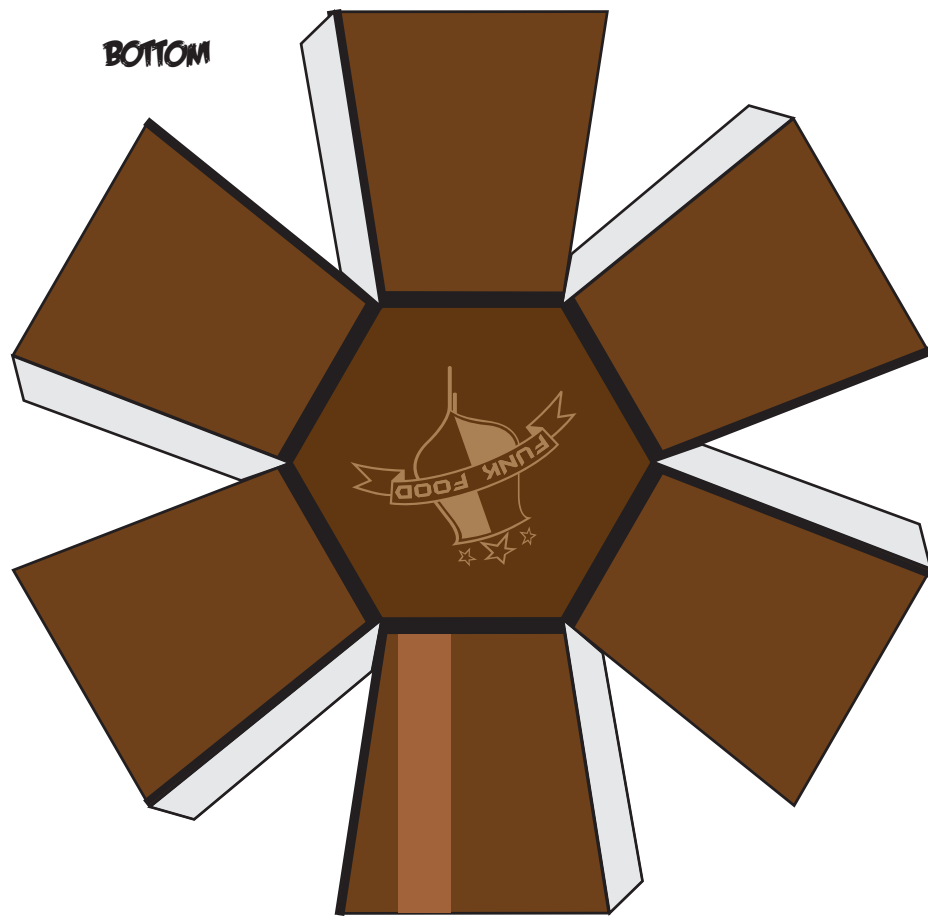


## INSTRUCTIONS BODY:

1. SCORE ALL LINES.
2. CUT OUT WHITE LINE IN BODY FOR THE ARMS.
3. CUT OUT BODY AND TOP OF HEAD.
4. CUT AND GLUE STEM TOGETHER AND VSTICK INTO TOP OF HEAD.
5. FOLD THE LINES AND GLUE BODY TOGETHER - BEFORE GLUEING OUTER TAB ATTACH TOP OF THE HEAD.
6. CUT OUT AND FOLD OVER ARMS, THEN GLUE TOGETHER
7. STICK ARMS IN SIDE OF BODY.  
(IF NEEDED, SCORE AT THE EDGE OF THE WHITE PART OF ARMS, CUT AT THIN DOTTED LINE AND GLUE TO INNER SIDE OF BODY)

## TOP OF HEAD





PAPER CACTUS CREATED BY NICK KNIFE © 2011 - [WWW.NICKKNIFE.COM](http://WWW.NICKKNIFE.COM) -

**INSTRUCTIONS POT:**

1. SCORE ALL LINES (NOTE: THERE ARE TWO SCORE-LINES ON TOP PART THAT BUILD THE RIM AND GO OVER THE BOTTOM PART).
2. CUT OUT, FOLD AND GLUE BOTTOM PART OF POT.
3. CUT OUT TOP PART OF POT, CUT WHITE LINES - CACTUS GOES IN THERE.
4. FOLD THE LINES:  
-INNER PART IS A VALLEY-FOLD.  
-FOLD OVER THE RIM.
5. GLUE TOGETHER INNER PART (INWARDS).
6. START GLUEING OUTER PART FOLDED OVER.
7. AFTER TWO OR THREE PARTS ARE GLUED TOGETHER, PUT OVER BOTTOM AND CONTINUE GLUEING THE REST. NOW IT WILL FIT LIKE A GLOVE!
8. STICK CACTUS INTO POT.
9. AND MOST IMPORTANT: NO WATERING NECESSARY!