

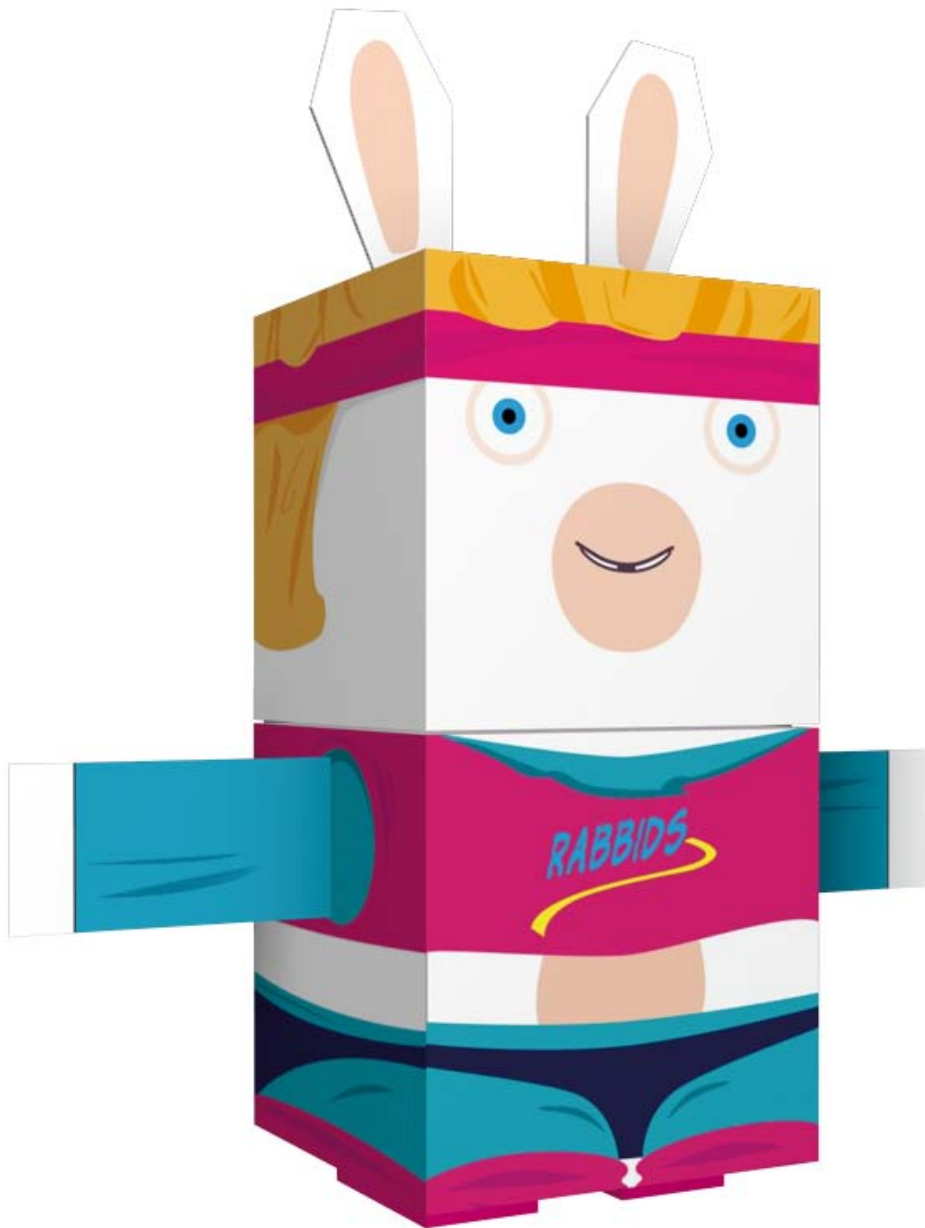
**UHU**®

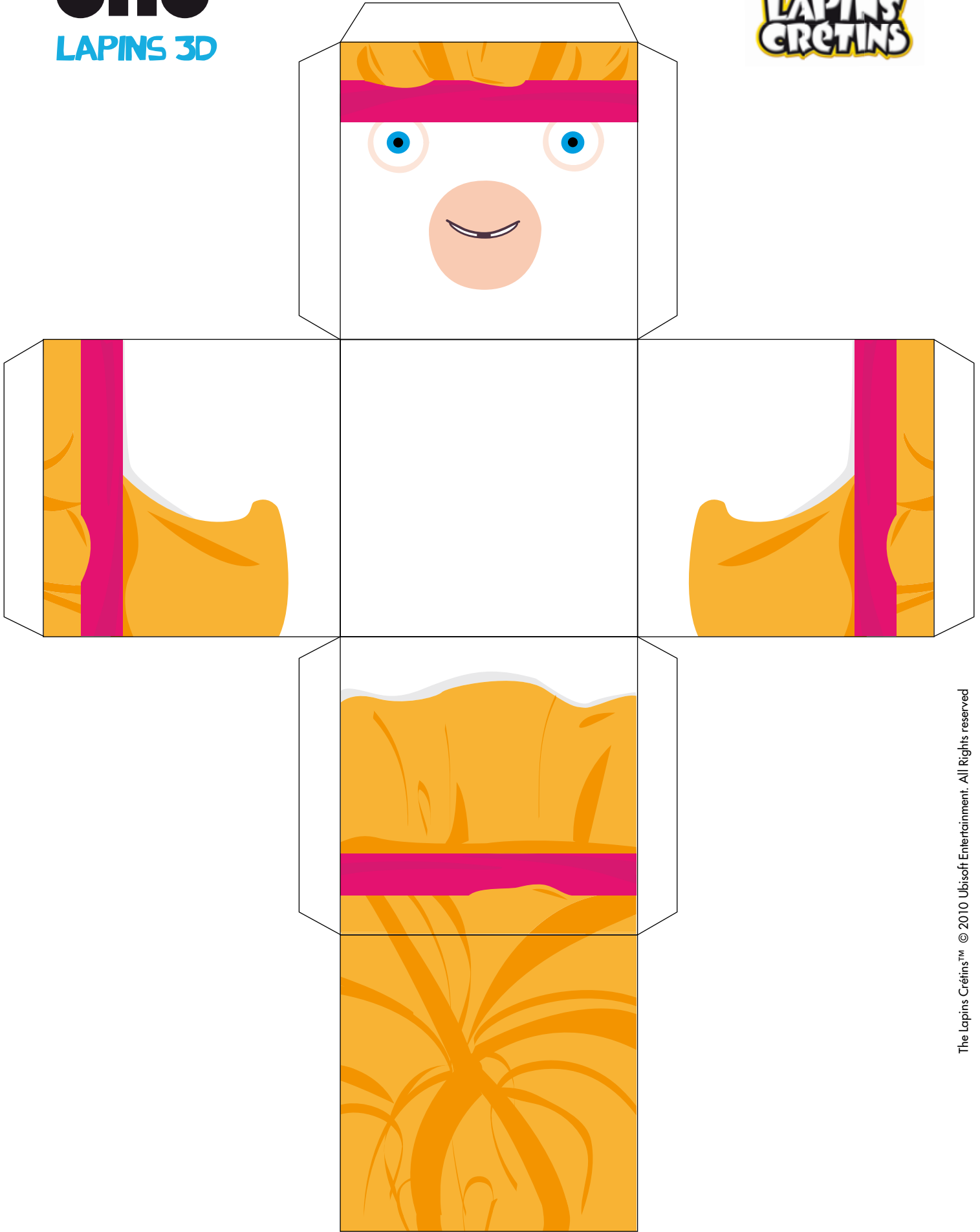
## LAPINS 3D

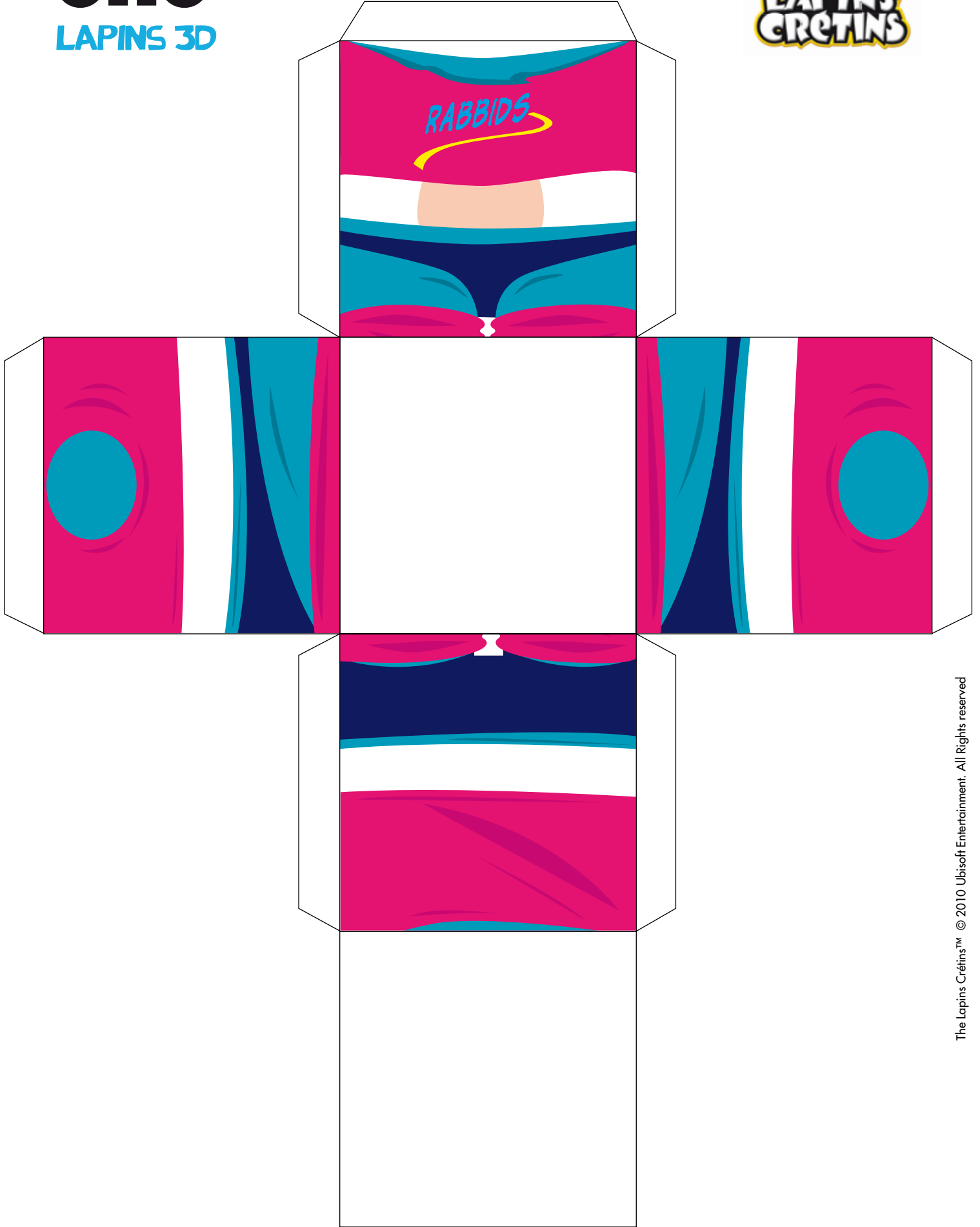
CRÉE TON PROPRE LAPIN CRÉTIN !

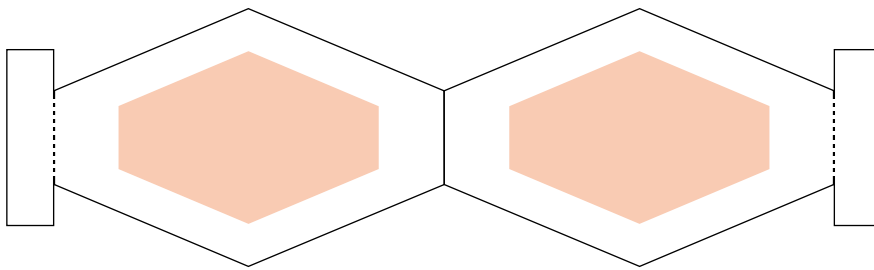
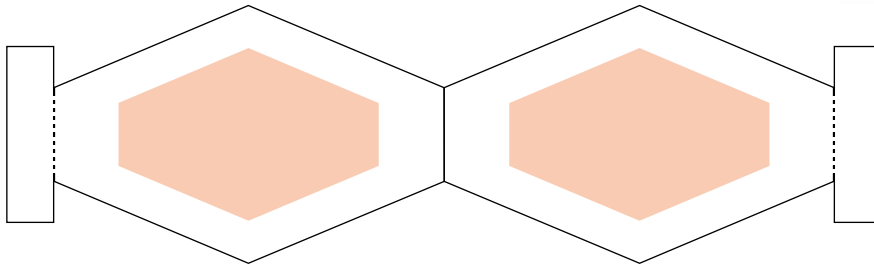


- 1 - Imprime ces pages.
- 2 - Découpe tous les éléments.
- 3 - Plie-les selon les traits.
- 4 - Construis ton lapin en le collant à l'aide de ton **stic UHU**.

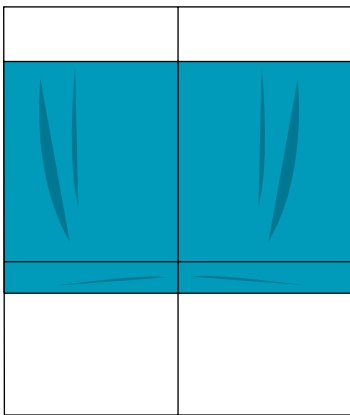








**2** - Plie puis colle la petite partie sur le corps du lapin



**1** - Plie les deux parties puis colle-les

