

UHU®

LAPINS 3D

CRÉE TON PROPRE LAPIN CRÉTIN !



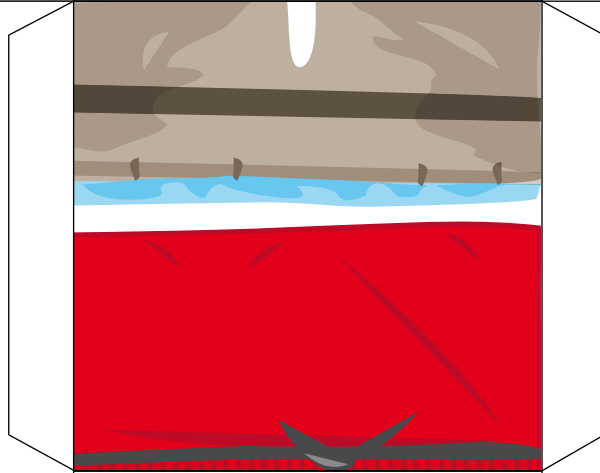
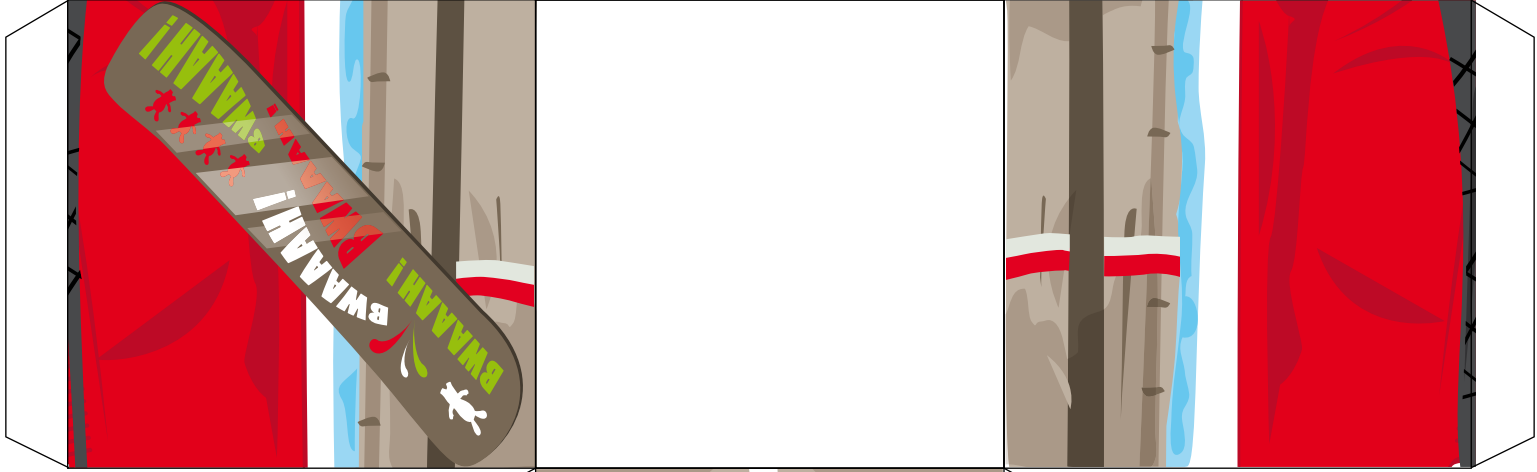
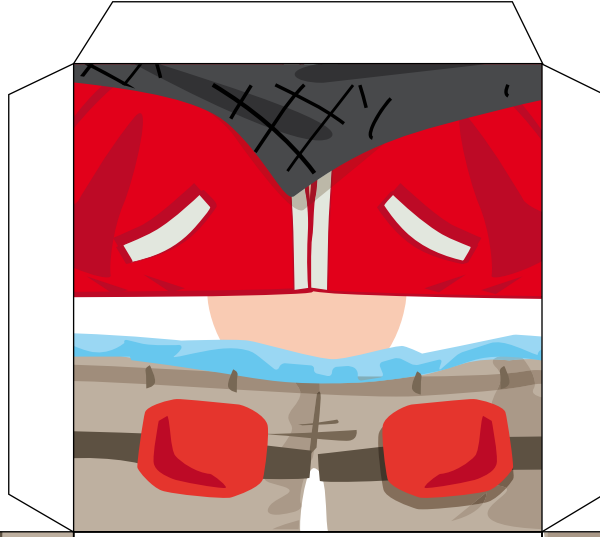
- 1 - Imprime ces pages.
- 2 - Découpe tous les éléments.
- 3 - Plie-les selon les traits.
- 4 - Construis ton lapin en le collant à l'aide de ton **stic UHU**.

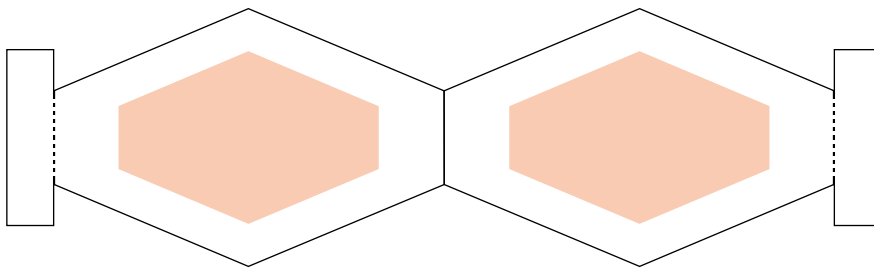
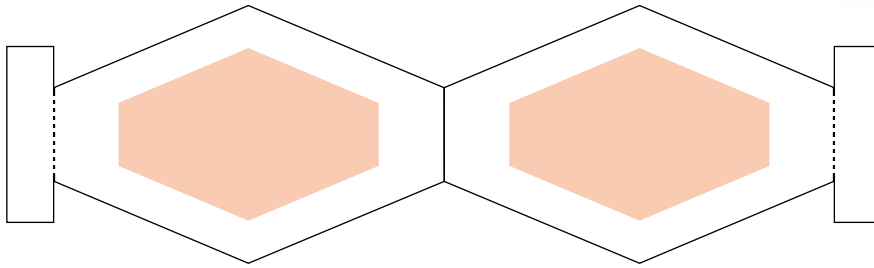


UHU[®]
LAPINS 3D

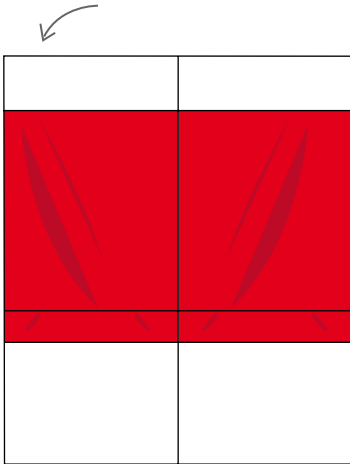


UHU[®]
LAPINS 3D





2 - Plie puis colle la petite partie sur le corps du lapin



1 - Plie les deux parties puis colle-les

