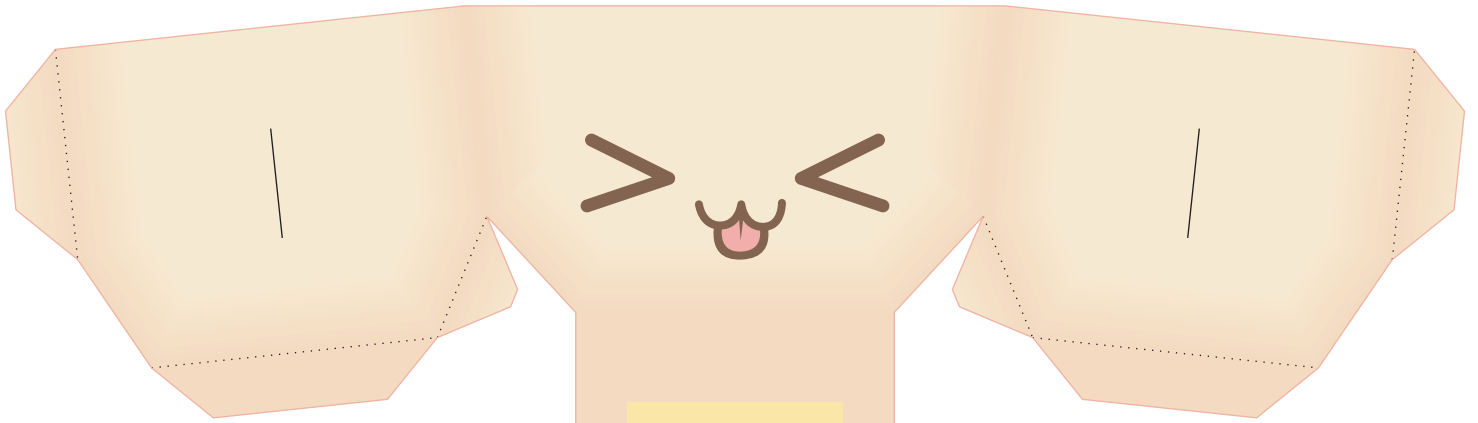
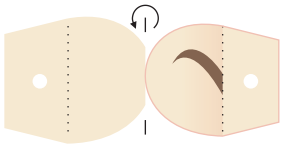


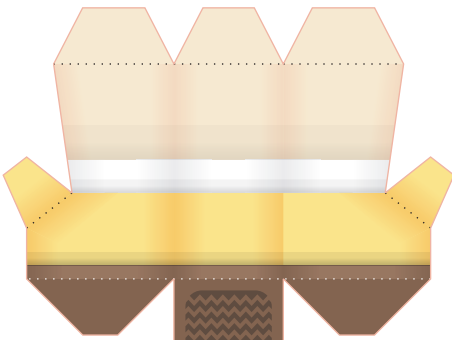
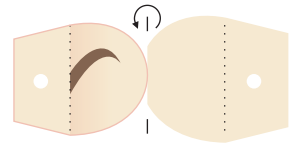
HEAD



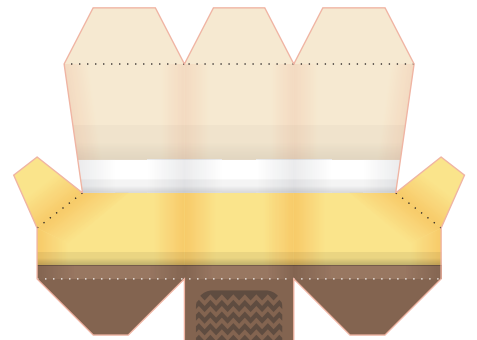
EAR



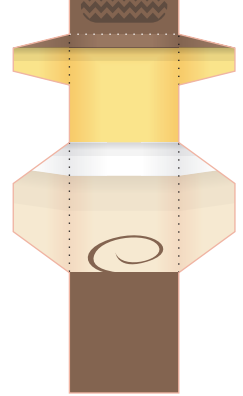
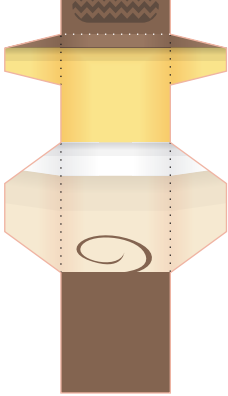
EAR



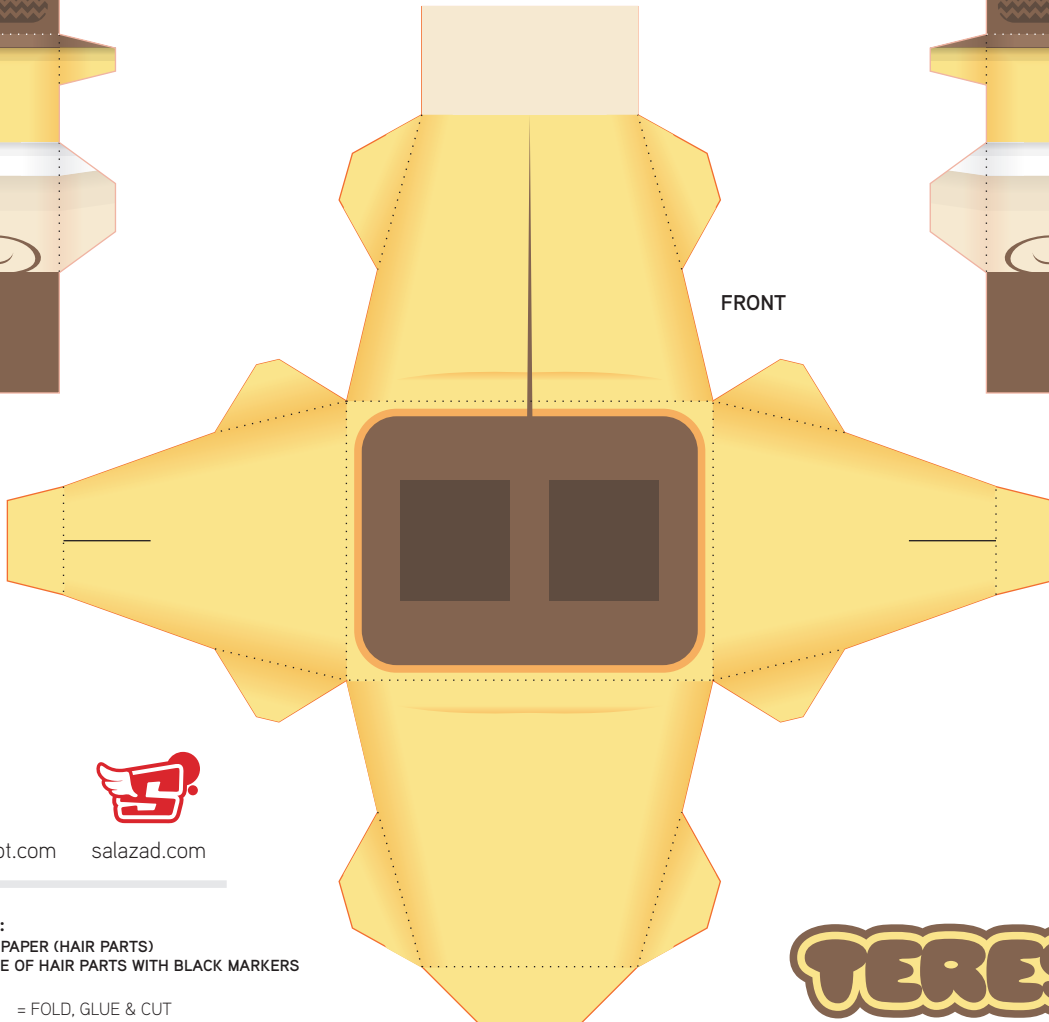
LEG



LEG



FRONT



BODY



kepalakardus.blogspot.com



salazad.com

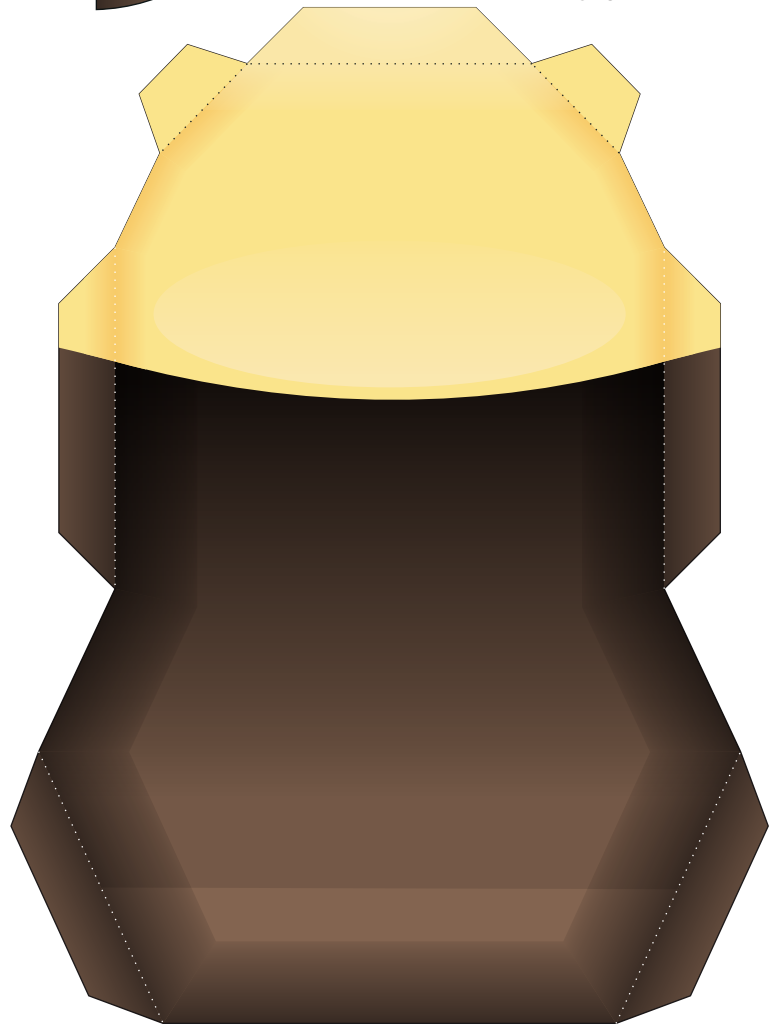
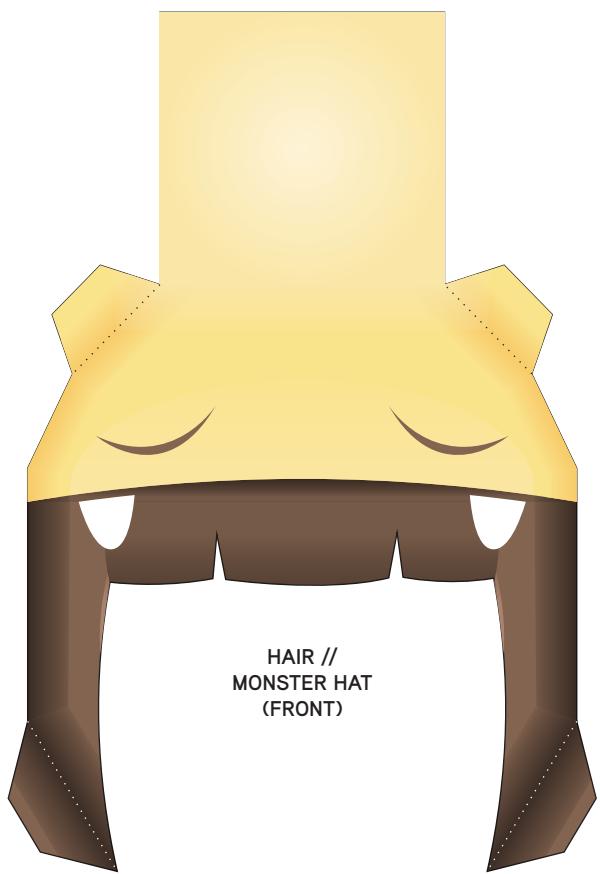
FOR BEST RESULTS :
PLEASE USE 120-220 GSM PAPER (HAIR PARTS)
AND FULFILL THE BACKSIDE OF HAIR PARTS WITH BLACK MARKERS

- = CUT LINE
- ⤵ = FOLD, GLUE & CUT
- ⋯ = FOLD LINE
- = INSERT AND GLUE



TERESHA

facebook.com/pages/Teresha-Bathroom/209191402449959



SPECIAL INSTRUCTION :
 GLUE THESE FLAPS AFTER YOU PLACED THE HEAD PART
 TO THE MONSTER HAT // HAIR.