

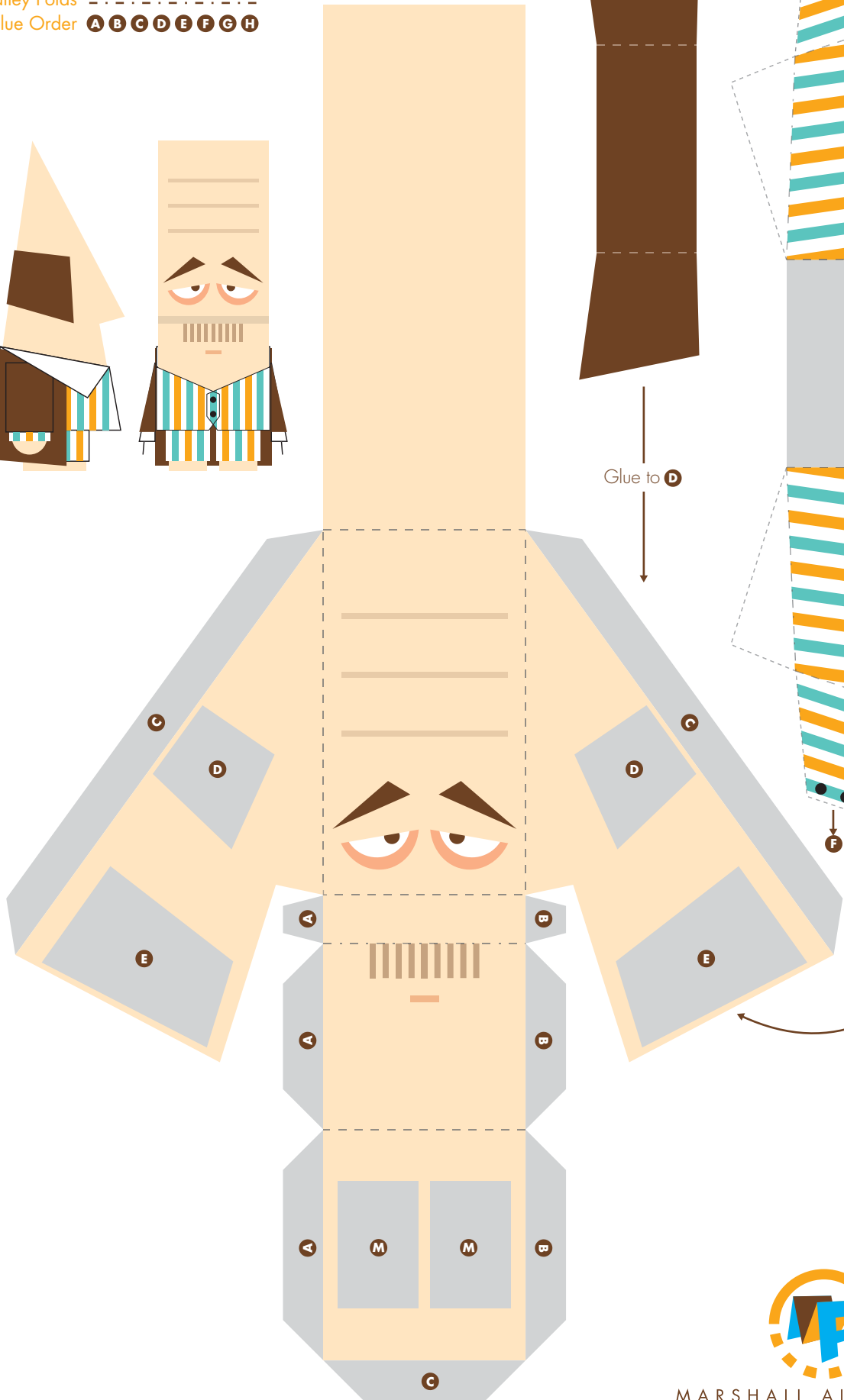
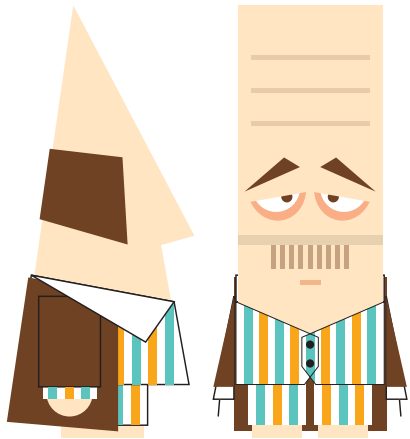
Model **TOO EARLY FOR BREAKFAST**

Cut -----

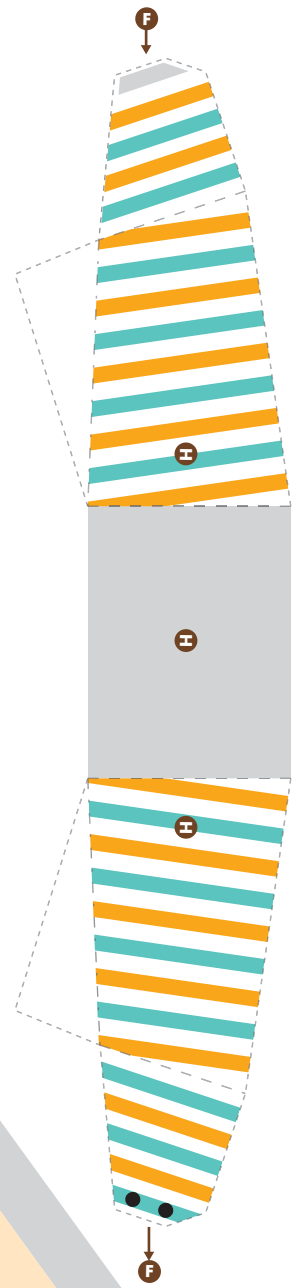
Hill Folds - - - - -

Valley Folds - - - - -

Glue Order **A B C D E F G H**



Glue to **D**



Glue to **E**



MARSHALL ALEXANDER  
PAPER ENGINEER

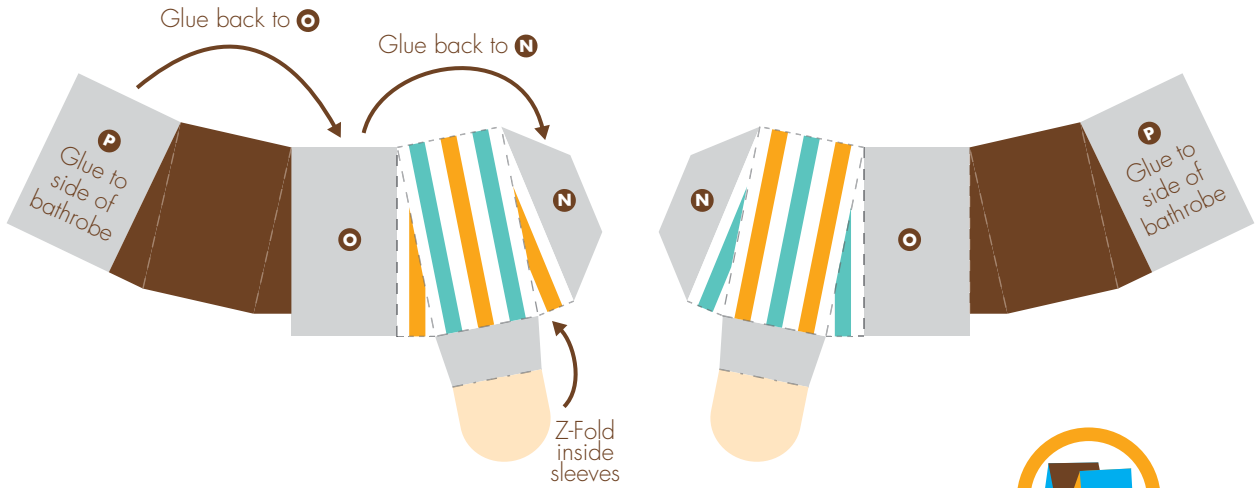
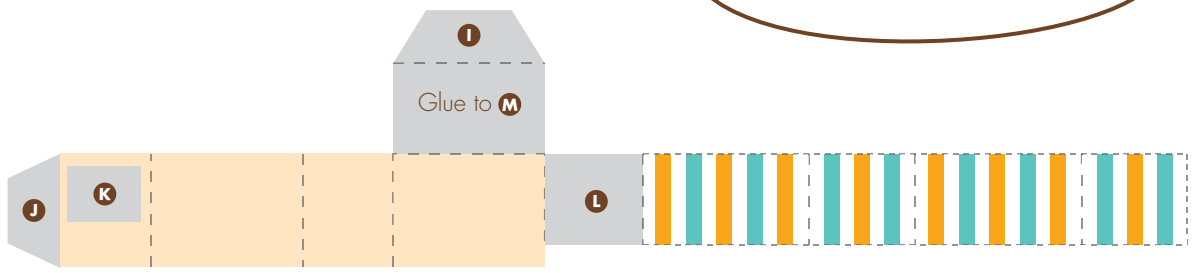
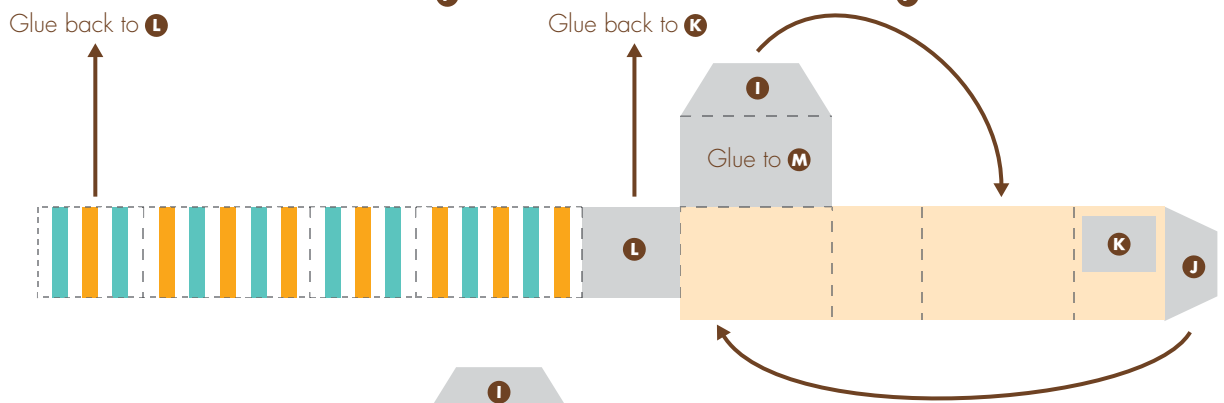
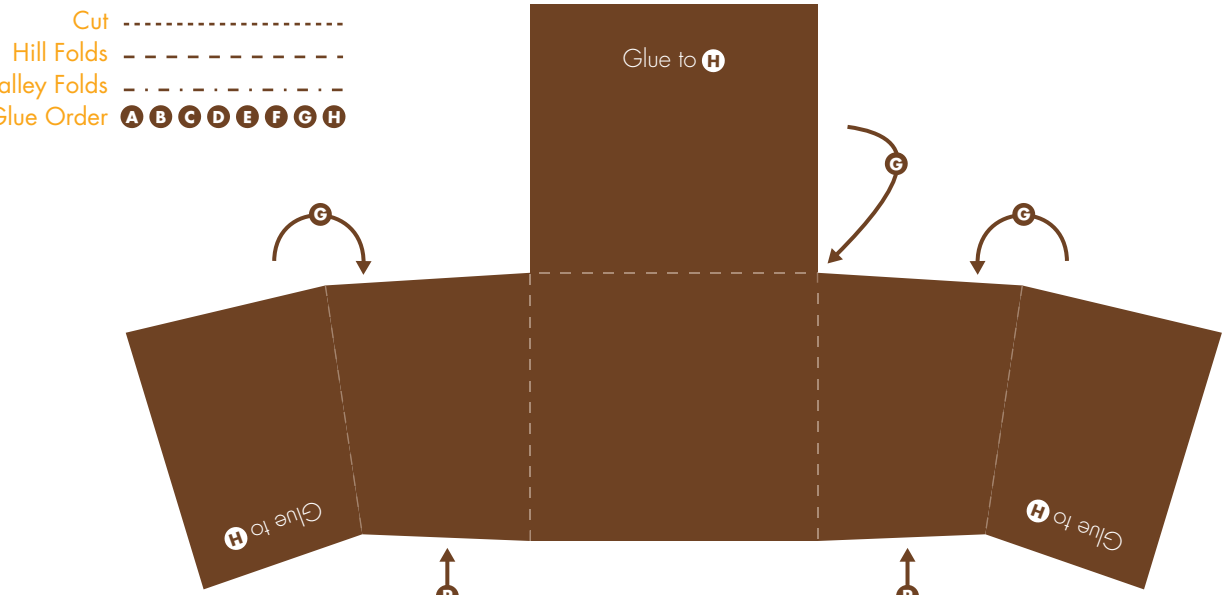
Model **TOO EARLY FOR BREAKFAST**

Cut -----

Hill Folds - - - - -

Valley Folds -----

Glue Order **A B C D E F G H**



MARSHALL ALEXANDER  
PAPER ENGINEER

Model **TOO EARLY FOR BREAKFAST**

Cut -----

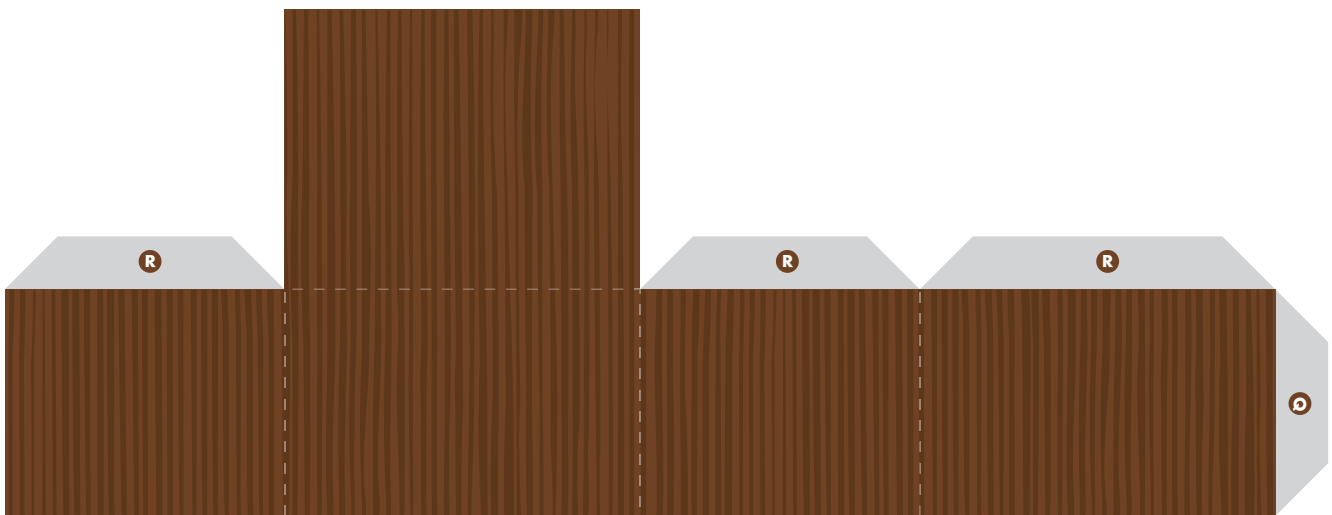
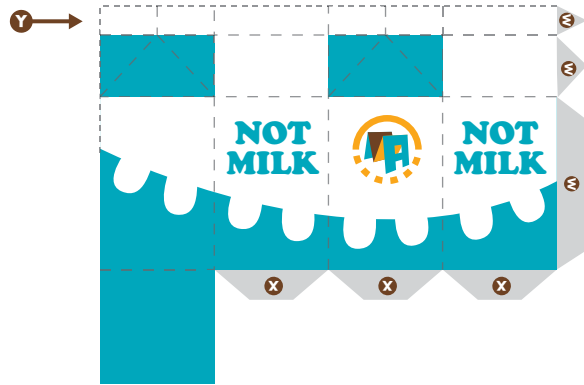
Hill Folds -----

Valley Folds -----

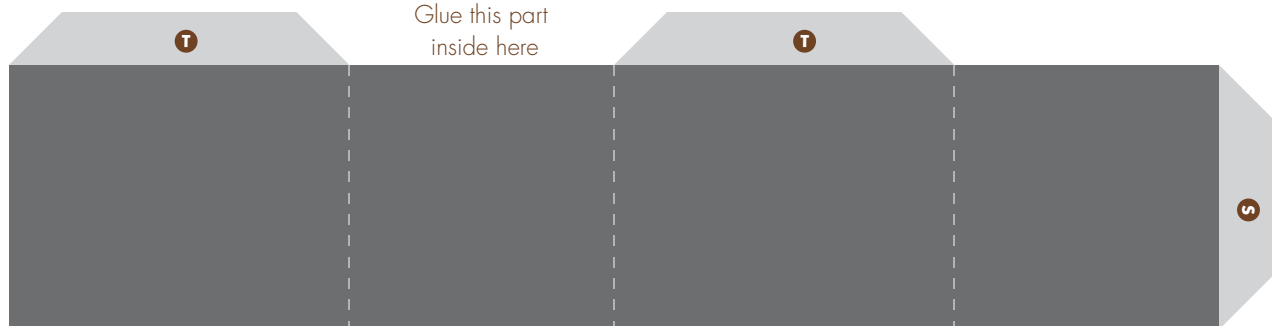
Glue Order **A B C D E F G H**



Put glue on this small strip and carefully push it together to close milkcarton



↑  
Glue this part  
inside here



MARSHALL ALEXANDER  
PAPER ENGINEER