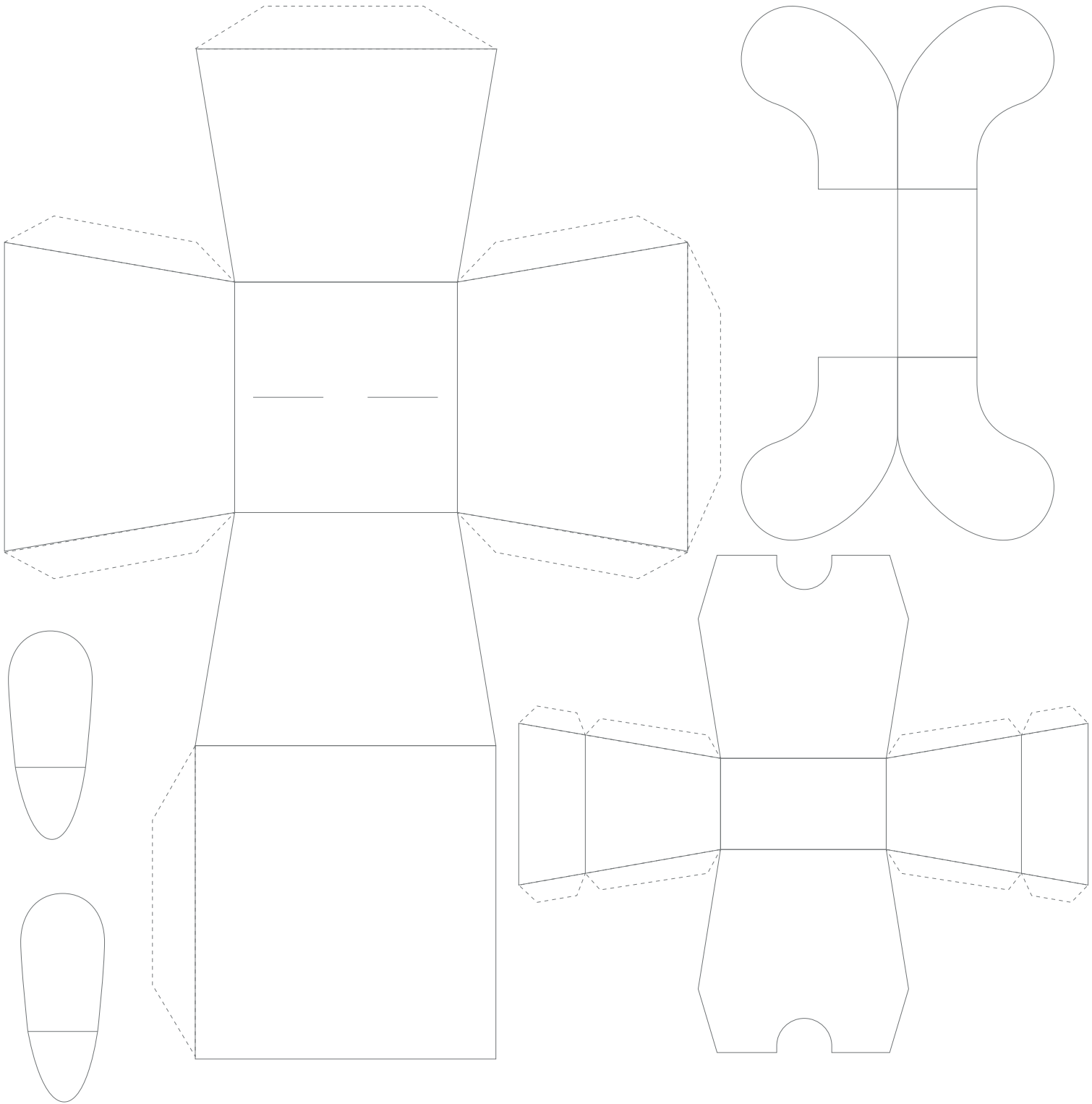


YOUR PEPETZ'S NAME : _____



CHARACTERISTICS

STRENGTH	/10	INTELLIGENCE	/10	SOCIAL	/10
DEXTERITY	/10	WISDOM	/10	KAWAIIINESS	/10

INSTRUCTIONS

- 1 . Cut out your Pepetz with a pair of scissors (an axe can work too).
- 2 . Fold on according to the lines separating all Pepetz faces.
- 3 . Use some glue to stick the flaps marked "glue" and press them against the matching side.
- 4 . Your Pepetz is alive, you can now pimp your desk.