

Model **SURPRISE!**

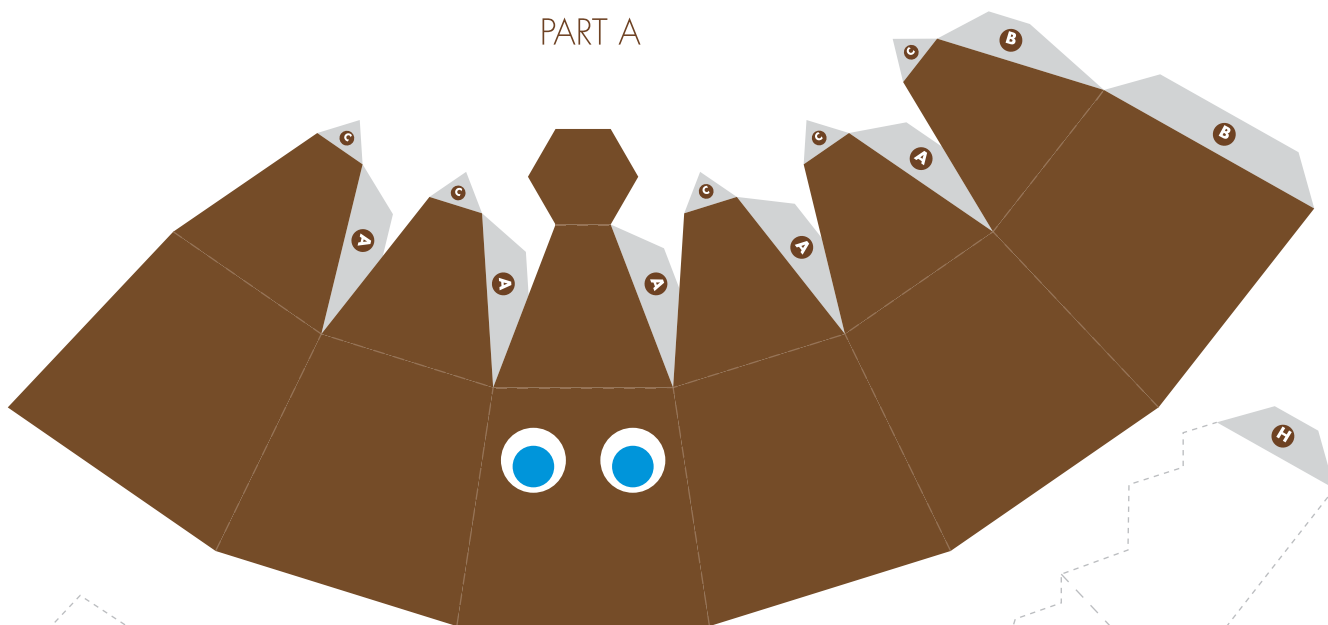
Cut -----

Hill Folds - - - - -

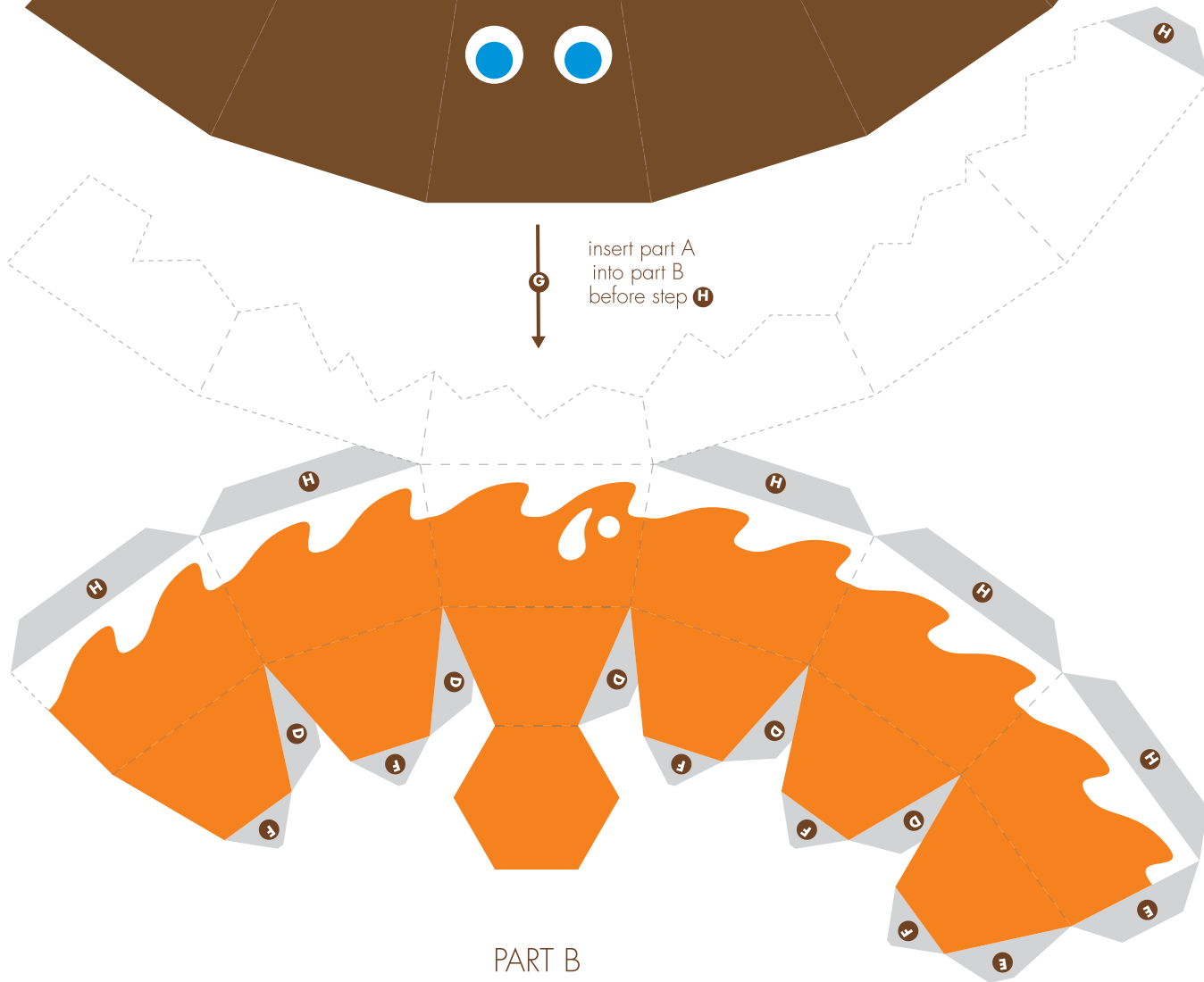
Valley Folds - - - - -

Glue Order **A B C D E F G H**

PART A



insert part A  
into part B  
before step **H**



PART B



MARSHALL ALEXANDER  
PAPER ENGINEER

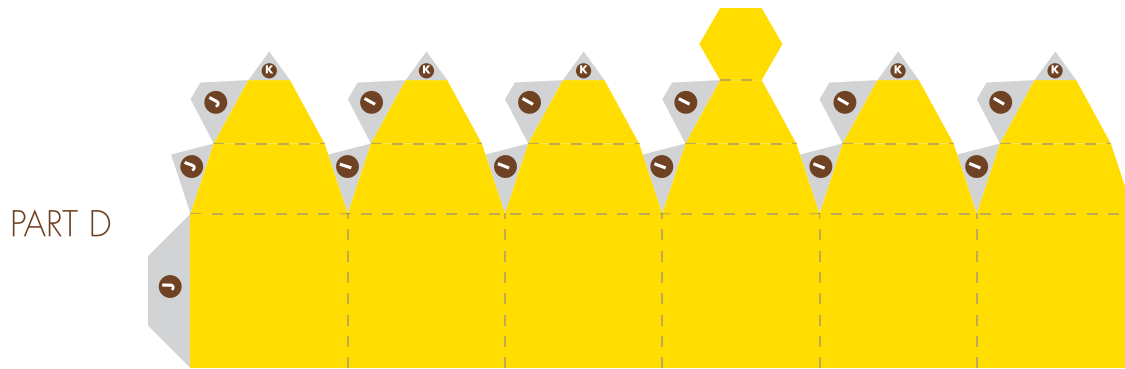
Model **SURPRISE!**

Cut -----

Hill Folds - - - - -

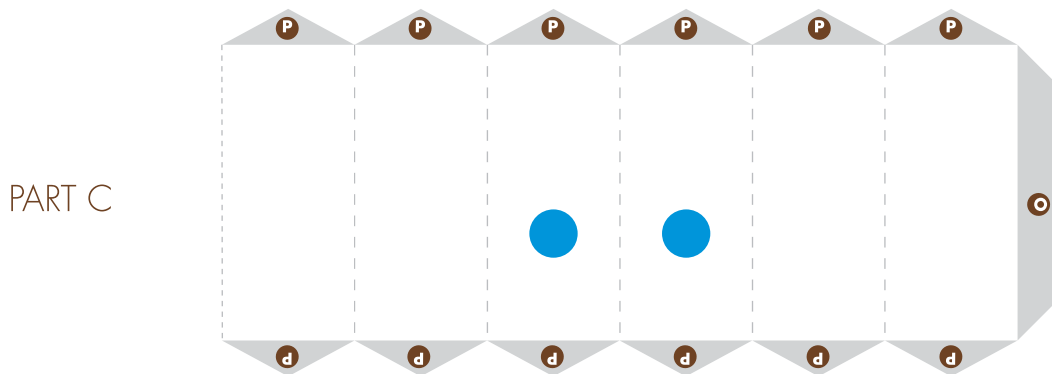
Valley Folds - - - - -

Glue Order **A B C D E F G H**



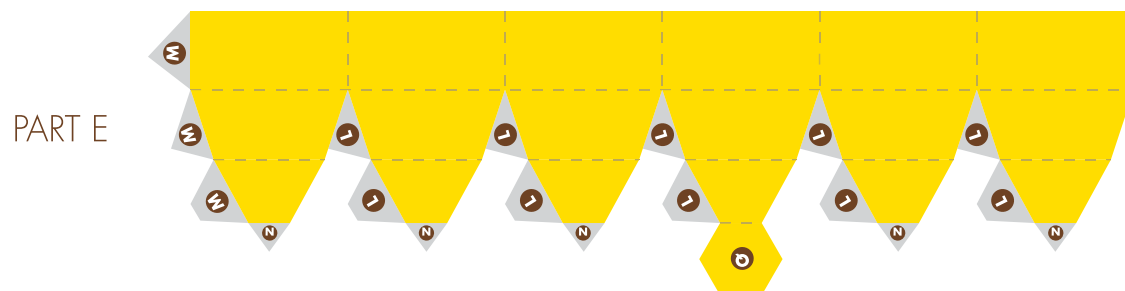
PART D

add glue to gluetabs **P** and insert part C into part D and E



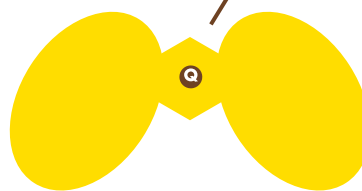
PART C

add glue to gluetabs **P** and insert part C into part D and E



PART E

glue part F to the bottom of part E



PART F



MARSHALL ALEXANDER  
PAPER ENGINEER